

\$507,990 - 24031 West Cypress Way, Milton

MLS® #DESU2099600

\$507,990

3 Bedroom, 2.00 Bathroom, 2,070 sqft
Residential on 0.26 Acres

WOODFIELD PRESERVE, Milton, DE

Explore a to-be-built new home at 24031 West Cypress Way in the beautiful neighborhood of Woodfield Preserve in Milton, DE.

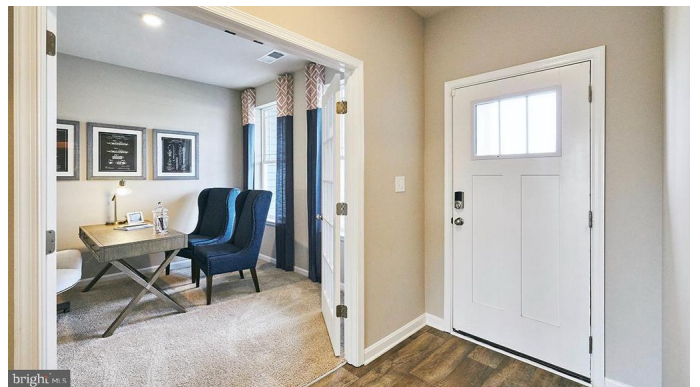
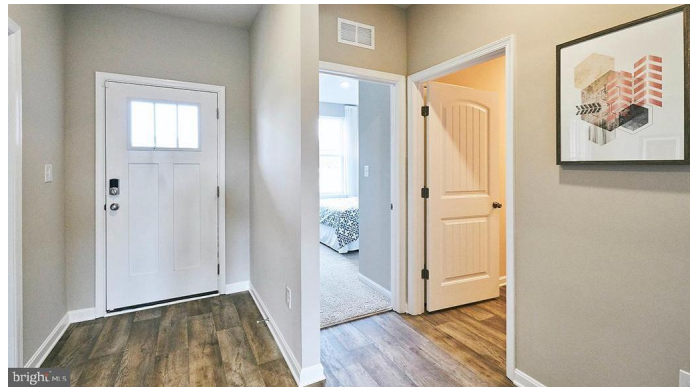
This home is not currently under construction but is one of the floorplans you can choose to build within this community. Prices vary based on selected upgrades, and prices shown generally refer to the base house without optional features. You™ll work with the builder to select from the plan options to construct your dream home.

The Galveston is a 2,070 square foot, open concept home offering three bedrooms, two bathrooms, 9™ ceilings, and a two-car garage.

A welcoming foyer leads you to the inviting flex room a versatile space and abundant natural light on one side. On the other side are two spacious guest bedrooms, a guest bathroom, and a linen closet.

The home's well-designed kitchen features modern cabinets, quartz countertops, a generous walk-in pantry, an oversized island with additional room for seating and stainless steel appliances. The kitchen is open to the ample living room and dining room that leads to the quiet covered porch.

The large owner™s suite is a retreat in the back of the home; its private bathroom has a



double bowl vanity, frameless shower, oversized linen closet, and walk-in closet. Tucked away behind the kitchen and near the garage is the laundry room and a coat closet.

This home includes a tankless water heater, white window blinds, a whole yard irrigation system and the exclusive Smart Home package through ADT will give you complete peace of mind living in your new home.

Pictures, artist renderings, photographs, colors, features, and sizes are for illustration purposes only and will vary from the homes as built. Image representative of plan only and may vary as built. Images are of model home and include custom design features that may not be available in other homes. Furnishings and decorative items not included with home purchase.

Essential Information

MLS® #	DESU2099600
Price	\$507,990
Bedrooms	3
Bathrooms	2.00
Full Baths	2
Square Footage	2,070
Acres	0.26
Type	Residential
Sub-Type	Detached
Style	Contemporary, Rancher
Status	Active

Community Information

Address	24031 West Cypress Way
Area	Broadkill Hundred (31003)
Subdivision	WOODFIELD PRESERVE
City	Milton

County SUSSEX-DE
State DE
Zip Code 19968

Amenities

Amenities Carpet, Entry Lvl BR, Pantry, Master Bath(s), Recessed Lighting, Stall Shower, Tub Shower, Upgraded Countertops, Wainscotting, Walk-in Closet(s), Crown Molding, Shades/Blinds, Washer/Dryer Hookup
Parking Concrete Driveway
of Garages 2
Garages Garage - Front Entry, Inside Access
Has Pool Yes
HOA Amenities Club House, Common Grounds, Exercise Room, Fitness Center, Pool-Outdoor, Tot Lots/Plygrd, Other, Billiard Room

Interior

Interior Features Floor Plan-Open
Appliances Dishwasher, Disposal, Energy Star Appliances, Microwave, Oven/Range-Gas, Stainless Steel Appliances, Water Heater - Tankless
Heating 90% Forced Air, Programmable Thermostat, Heat Pump - Gas BackUp
Cooling Central A/C
of Stories 1
Stories 1 Story

Exterior

Exterior Concrete/Block, Vinyl Siding
Exterior Features Lawn Sprinkler, Sidewalks
Lot Description Interior
Roof Architectural Shingle
Foundation Slab

School Information

District CAPE HENLOPEN
Elementary MILTON
Middle MARINER
High CAPE HENLOPEN

Additional Information

Date Listed October 28th, 2025
Days on Market 18

Zoning AR1

Listing Details

Listing Office D.R. Horton Realty of Delaware, LLC



© 2025 BRIGHT, All Rights Reserved. Information deemed reliable but not guaranteed. The data relating to real estate for sale on this website appears in part through the BRIGHT Internet Data Exchange program, a voluntary cooperative exchange of property listing data between licensed real estate brokerage firms in which Northrop Realty participates, and is provided by BRIGHT through a licensing agreement. Real estate listings held by brokerage firms other than Northrop Realty are marked with the IDX logo and detailed information about each listing includes the name of the listing broker. The information provided by this website is for the personal, non-commercial use of consumers and may not be used for any purpose other than to identify prospective properties consumers may be interested in purchasing. Some properties which appear for sale on this website may no longer be available because they are under contract, have Closed or are no longer being offered for sale. Some real estate firms do not participate in IDX and their listings do not appear on this website. Some properties listed with participating firms do not appear on this website at the request of the seller.

Listing information last updated on November 14th, 2025 at 1:16pm EST